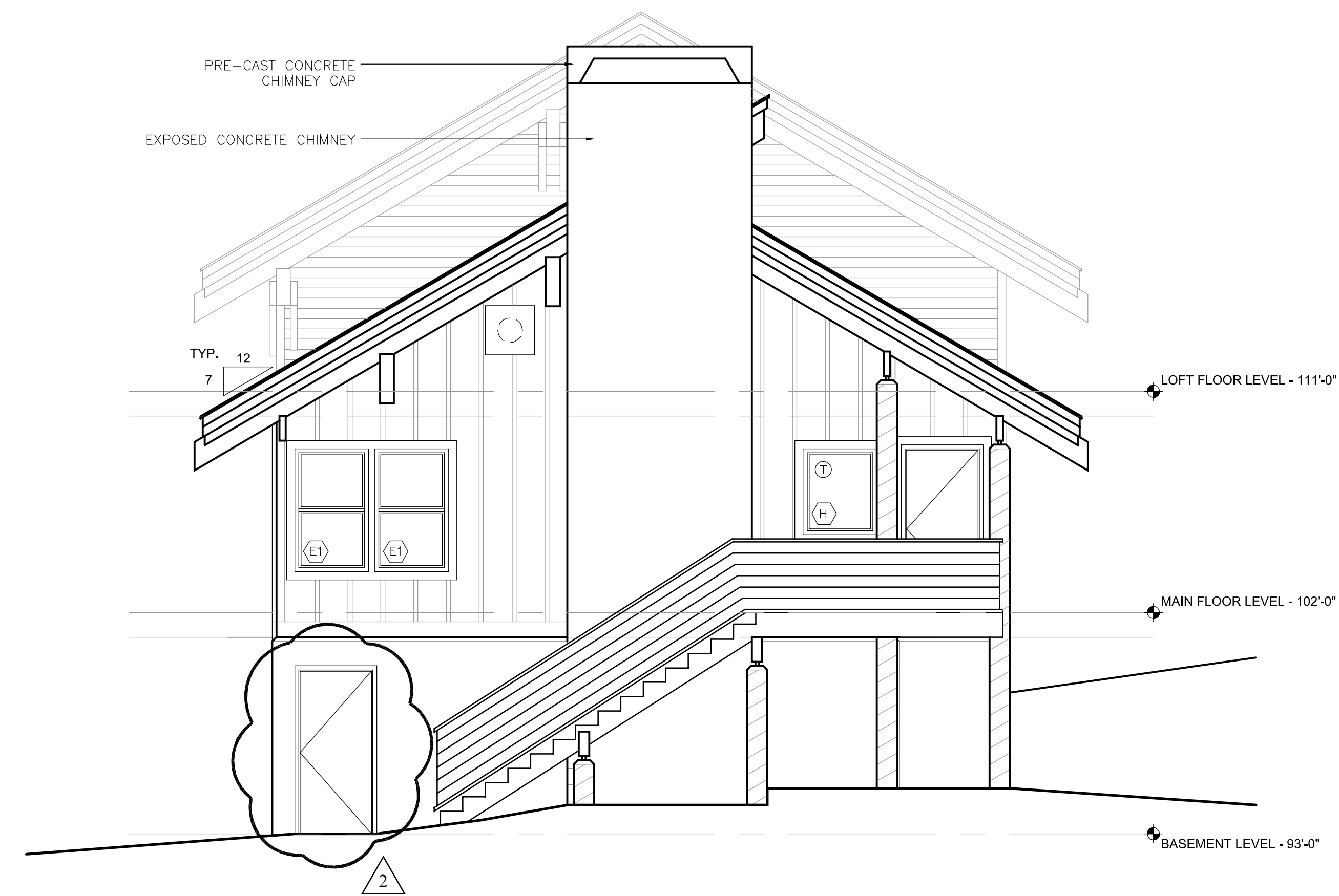
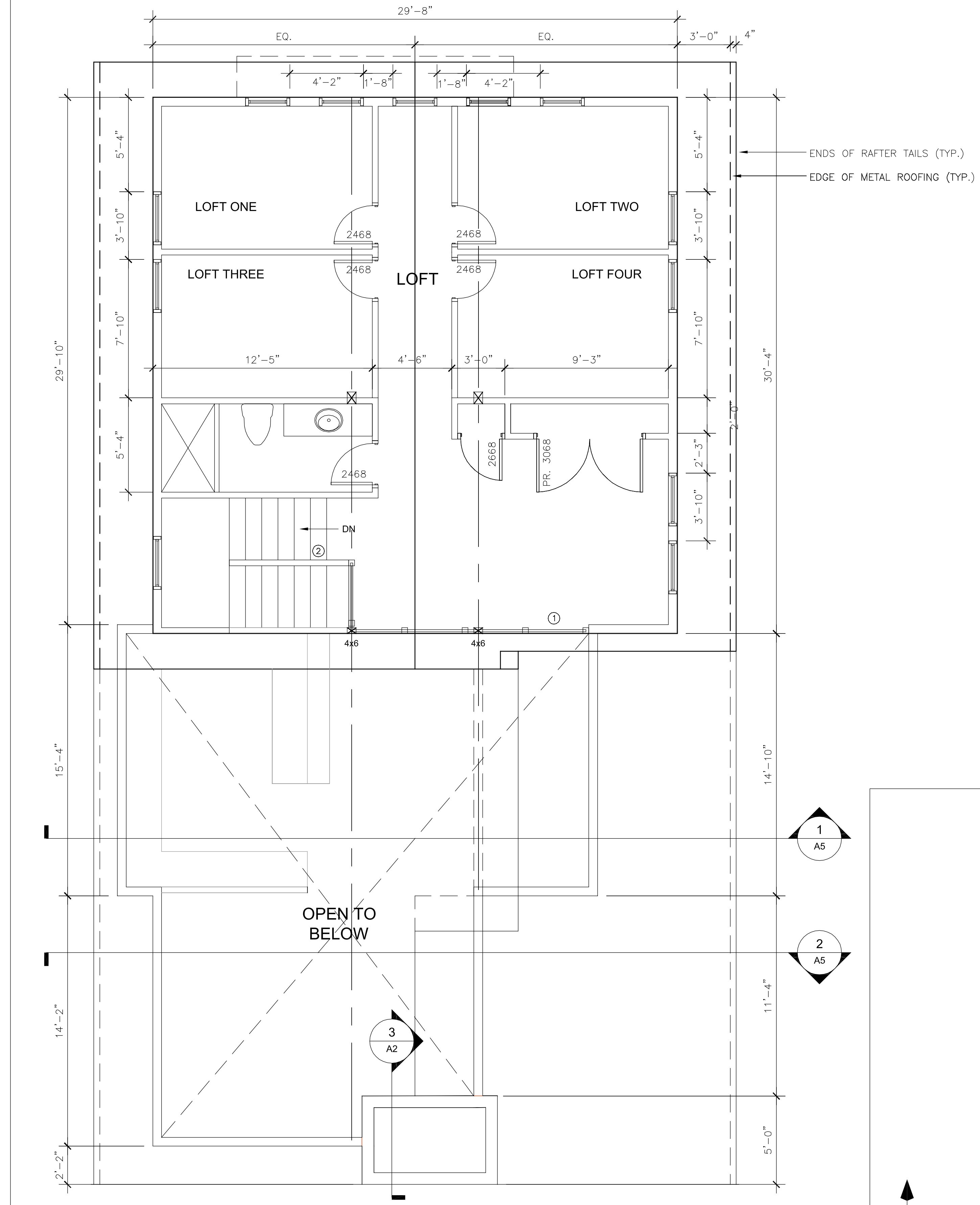


1 NORTH ELEVATION (LITTLE TRAIL STREET ELEVATION)
1/4" = 1'-0"

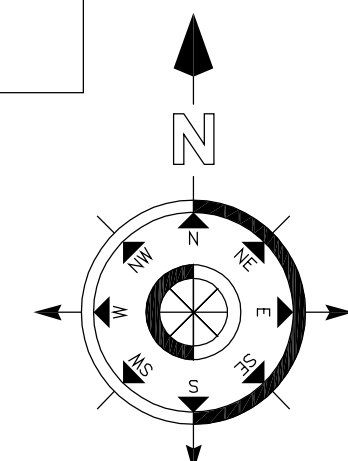


2 SOUTH ELEVATION
1/4" = 1'-0"



3 LOFT LEVEL FLOOR PLAN
1/4" = 1'-0"

GROSS SQUARE FOOTAGE = 900 SF



SANDLER / SROFE MOUNTAIN DWELLING
GOVERNMENT CAMP, OREGON
LOFT PLAN / EXTERIOR ELEVATIONS

REVISED: 02.28.05
REVISED: 04.10.04
DATE: 02.27.04
CHECK:
DRAWN BY: TLA
PROJECT #: mndwlg

SHEET:

A 3